



INTRAPLEX® CM-30R

IP Network Conversion Card for T1/E1 Multiplexers

Keep Your Existing Intraplex Multiplexers in the Move to IP.

Forget about retiring perfectly good Intraplex systems when moving from T1 or E1 to IP. The new NetXpress LX IP interface module, the CM-30R, can replace the network interface module in existing Intraplex T1/E1 systems, converting them to IP while keeping the existing chassis with all of its audio, voice and data cards.

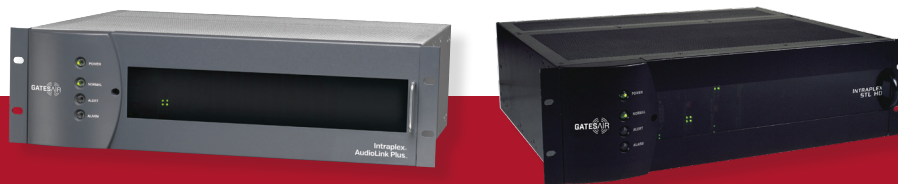


Converting your existing Intraplex T1 multiplexer to IP is as easy as plugging in a card.

IP data transport can offer bandwidth and reliability equivalent to T1/E1 circuits with lower recurring costs. The Intraplex® CM-30R IP network card lets you retain the rock-solid reliability and outstanding quality of your current Intraplex T1 or E1 system, while migrating to lower-cost, high-performance IP networks such as MPLS. In addition, the CM-30R will double the capacity of the chassis-enabling expansion of services.

Installation is quick and easy. Built-in intelligence allows you to field-convert your T1/E1 system in minutes. The Intraplex® CM-30R is compatible with the existing interface cards for audio, voice and data traffic in your Intraplex multiplexers, and works with SynchroCast3™ simulcast systems for FM transmission.

The CM-30R is an excellent choice for your IP upgrade because it pays for itself by reducing your network services expenses — while retaining the superior operation of the Intraplex system you trust.



Intraplex CM-30R IP network cards are fully compatible with current Intraplex multiplexers such as the STL HD™, AudioLink PLUS™, Access Server, and nearly all other installed Intraplex T1/E1 multiplexer frames.

Intraplex CM-30R

Specifications

Specifications and designs are subject to change without notice

Network Interface	
Ethernet Data Rate	<ul style="list-style-type: none">10/100Base-T (10 or 100 Mb/s)Full duplex auto-negotiation with network
Network Connections	<ul style="list-style-type: none">Port 1: WAN, RJ45Port 2: LAN, RJ45
Circuit Connection	<ul style="list-style-type: none">Up to 32 streams/connectionsPoint-to-point unidirectionalPoint-to-point bidirectionalPoint-to-multipoint unidirectional multicast per IGMP v2
Network Protocols Supported	<ul style="list-style-type: none">IP, TCP, UDP, RTP, DHCP, DNS, HTTP, FTP, Telnet, NTP, SNMPv2c, RTCP, ARP, ICMP, IGMPv2
Timing	<ul style="list-style-type: none">Internal, external, RS-422 clock inputAdaptive to incoming program streamTiming out, RS-422 clock output
Redundancy	
Hardware Redundancy	<ul style="list-style-type: none">Hardware redundancy with dual CM-30RAutomatic and manual failover and reversionAutomatic synchronization of system configuration
Stream Parameters (per stream)	
Forward Error Correction	<ul style="list-style-type: none">High, low, offUser-adjustable
Packet Optimization	<ul style="list-style-type: none">Packet size/rate, allows control over the inherent tradeoff between overhead and delayJitter buffer depth to 128 packets, provides compensation in excess of 1 second of network jitterUser-adjustable
Quality of Service	<ul style="list-style-type: none">IPv4 type of service (ToS) taggingDifferentiated service (DiffServ)
Status and Diagnostics	
Network Performance Statistics (per stream)	<ul style="list-style-type: none">Packet loss, packets received, packets sent, packets dropped, packet count and delay variation
Loopbacks	<ul style="list-style-type: none">Received stream loopback, equipment loopback
Remote Management	<ul style="list-style-type: none">Web browser user interfaceSNMP network management interface
Regulatory Compliance	<ul style="list-style-type: none">CE-compliant, FCC Part 15 Class A, UL 1950, RoHS-compliant
Performance cannot be guaranteed unless the IP network used has sufficient designated bandwidth to support the traffic that was previously carried on the T1/E1 system.	

Ordering Information

IX-CM-30R-PKG	Upgrade kit for Intraplex T1/E1 systems, containing two CM-30R cards and 2 MA-230 interface cards
Notes: The CM-30R can be used in place of — not at the same time as — the T1 or E1 common module (CM-3, CM-5, CM-5RB, CM-6, CM-7 or CM-7RB) card in an existing Intraplex T1/E1 multiplexer. However, a T1 or E1 multiplexer that has been converted for use on IP with the CM-30R can be converted back to T1 or E1 at a later date simply by removing the CM-30R and reinserting the T1/E1 card.	
Redundant Configuration	Upgrade kit for Intraplex T1/E1 systems, containing two CM-30R cards, an MA-231-1 card, and an MA-231-2 card
Notes: 2 CM-30R modules with pair of redundant Module Adapters – MA-231-1, MA-231-2.	