



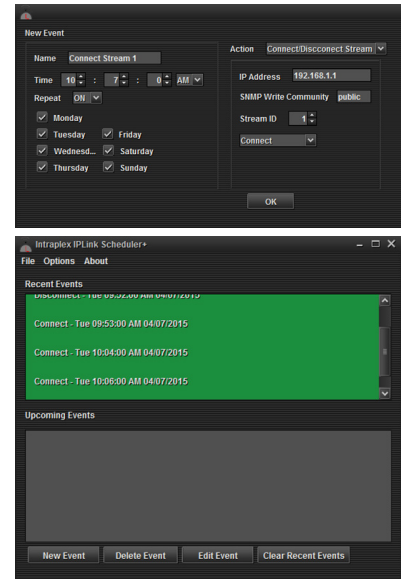
INTRAPLEX® SCHEDULER

Automation Application

GatesAir’s Intraplex® Scheduler application for IP Link provides an affordable option to automate daily or weekly recurring configuration changes of the IP Link audio streams.

In Radio Broadcast application, there are often scenarios where the configuration of the audio codec streams must be changed at scheduled times. One such use case is where the program source at a transmitter site needs to be changed depending on the time of the day. Another popular use case is where the protection of an audio stream needs to be adjusted during certain times of the day to overcome packet loss impairments.

Intraplex Scheduler provides the ability to program specific configuration commands that can be sent to the IP Link based on a time-of-the-day schedule. These actions can be configured to repeat on a daily or weekly basis, and include the following: switching the audio stream source of an output channel; turning a stream ON or OFF; changing the encoding rate of a stream; and changing the packet loss protection of a stream. The last two actions are generally coordinated to improve the packet loss protection of a stream while not exceeding the overall stream bandwidth utilization.



Intraplex® Scheduler Features

- One-shot or repeatable schedule of actions for changing stream’s parameters
- Daily or Weekly schedule which is persisted across application restarts
- Email notification of performed actions
- Easy-to-use user interface to configure the actions and schedule
- Controls multiple IP Link systems

Specifications

Specifications and designs are subject to change without notice

General	
Platform Requirements	<ul style="list-style-type: none"> • Windows or Linux operating system • Java Runtime Environment (JRE) version 7
Schedule for Action	<ul style="list-style-type: none"> • User defined name for the action • One shot or repeatable • Daily and Weekly timetable with one second granularity • Schedule persisted across application restarts
Output Channel Command	<ul style="list-style-type: none"> • Change audio stream source of an output channel
Stream Commands	<ul style="list-style-type: none"> • Turn transmit or receive streams ON or OFF • Change transmit stream’s encoding rate (applies to codec with selectable encoding rate) • Change transmit stream’s Forward Error Correction (FEC) setting • Change transmit stream’s Time Diversity value • Change receive stream’s buffer size
Email	<ul style="list-style-type: none"> • User defined setting to send emails on action status

INTRAPLEX-SCHEDULER-JD-062824

